



MID-PACIFIC INSTITUTE

October 25, 2007
Volume 3

'Ohana Newsletter



Moon Madness

With the coordination of co-chairpersons Holly Gorence and Paul Czubryt, approximately 415 guests enjoyed an enchanted evening at the recent Moon Over Manoa silent auction and dinner. Guests were amazed by some of MPI's own young talents: the high school hula halau and the MPI choir. But the highlight of the evening was the silent auction. Attendees marveled at the many items up for bid, including the Preschool and Elementary School baskets, which raised approximately \$6,140 in addition to our \$8,544 direct cash contribution. Thank you to everyone who generously donated toward this fundraising event. Special thanks to the Preschool and Elementary School Class Basket Committee: Lisa Fife, Linda Lileikis, Lynne Rosevear, Akiko Marutani, Wendy Handa, Kim Sonson and Kaili O'Connell.



Spooky Festivities

The Elementary School will be hosting its annual Spooktivity event on Halloween Day, Wednesday, October 31st from 12:30pm to 2:00pm. The event is sure to be a spooktacular one with a Halloween Parade followed by performances by the Middle and High School students. Thank you to everyone who has helped make this event possible: MPI's Middle and High School students, MPI's Honor Society, Events Coordinator Bill Wheeler, and co-chairpersons Monique Todebush, Tracy McConnell and Karen Kawamura.



Setting Limits

Nationally recognized Parent Educator Kathy Bently will return to our campus for a second Parents-as-Partners session. Following up on the "Communicating with Your Child" workshop, Kathy will be advising parents on setting appropriate limits and consequences and how to enforce them. Much like Kathy's first workshop, this session will be filled with helpful information tips in addition to her very funny and relatable anecdotes.

This 'Ohana sponsored workshop will be held in the Wilcox Dining Room from 5:30pm to 7:00pm on Tuesday, November 6th. Childcare and a light dinner will be provided. Please be sure to RSVP to the school office by Wednesday, October 31st.





Ho Ho Ho!

Before we know it, Thanksgiving will have come and gone and Christmas will be knocking at our door. That means the annual Manoa Holiday Parade,

which is hosted by the East Manoa Lion's Club, will soon be here. The planning committee has already been hard at work getting prepared for the December 8th event. Don't forget to mark your calendars for this upcoming event! We look forward to seeing everyone at the parade showing off their holiday spirit and MPI school pride!

Fundraiser Corner

We have reached our first milestone in our Box Tops for Education Fundraiser...the first redemption for this school year. We are proud to announce that we will be redeeming over 2,900 box tops coupons! With your help, we have collected approximately 2,200 box tops within the past 2 months. That's roughly 3.5 times as many as we collected all year last year!

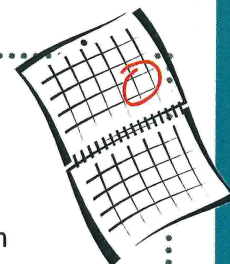
Special thanks and congratulations goes to Ms. Field's multi age 1/2 classroom, who have collected 535 box tops! Our next redemption will be at the end of February, so keep those coupons coming! You should have received a notice in the mail regarding our Scrips fundraiser, aka the gift card program. We hope you take advantage of this low-impact fundraiser organized by the school's PCA (Parent Community Association). The school will receive a percentage of the amount you purchase from each vendor. All of the proceeds from this fundraiser will be used to support classroom & technology improvements, capital improvement projects and the school's scholarship fund. Please be sure to submit your order by November 13th.



Sharing is Caring

Thank you to everyone who has donated canned goods through our Sharing Program. We will be able to help those in need and less fortunate with your generous contributions. Please continue to bring in your donations. Our next Sharing Program drop-off date is Thursday, November 15th.

Upcoming Events



MPI Open House

Saturday, October 27

Preschool Spooktivity

Wednesday, October 31, 9:00am

Elementary Spooktivity

Wednesday, October 31, 12:30pm

Parents-as-Partners Workshop

Tuesday, November 6, 5:30pm

No School - Veteran's Day Holiday

Monday, November 12

Sharing Program Drop-Off

Thursday, November 15

MPI PCA Meeting

Tuesday, November 20, 5:30pm

No School - Thanksgiving Holiday

Thursday, November 22 thru Friday, November 23

No School - Conference Prep

Friday, December 7

Other Happenings

Other upcoming events include the Manoa Holiday Parade on 12/8 and the Christmas Program on 12/19. For updates on other school events, please visit the MPI Elementary website for Ms. Hussey's Thursday letter. We invite you to review the 'Ohana meeting "Notes," also found on the MPI Elementary website, for a detailed synopsis of the 'Ohana meeting discussions. Please feel free to join us at the monthly 'Ohana meetings!